

vtech®

Instruction Manual



Supercharged Monster Truck Rally™

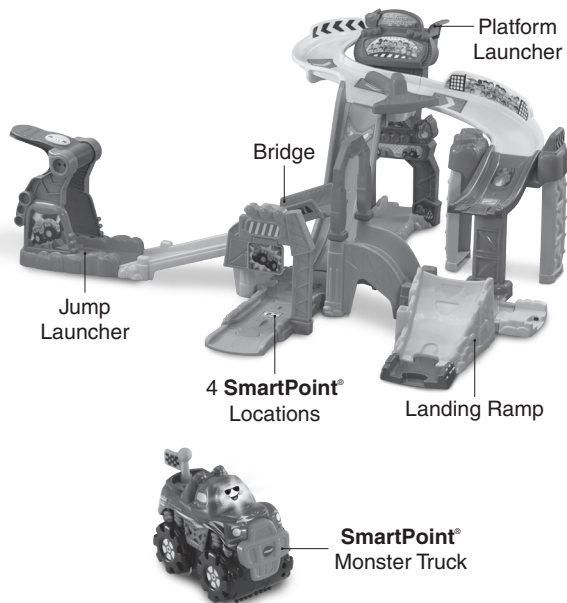


91-003998-000 ©

INTRODUCTION

Thank you for purchasing the **Go! Go! Smart Wheels® Supercharged Monster Truck Rally™**.

Little racers love performing all the stunts on this wild ride! Launch the Monster Truck off of one of two launchers and create multiple configurations for even more fun. Plus, hear fun music and sound effects when the vehicle responds to the four **SmartPoint®** locations. It's a great day to race!



INCLUDED IN THE PACKAGE



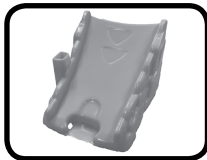
One **SmartPoint®**
Monster Truck



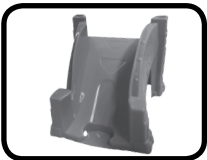
One jump launcher



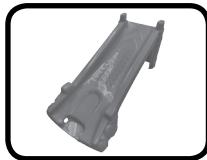
One jump launcher
base



One landing ramp



One slope track A



One slope track B



One stadium base



Two 1/3 length
bulge track pieces



One slope track C



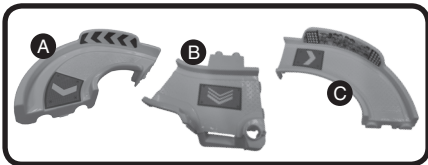
One fire awning



One platform
launcher



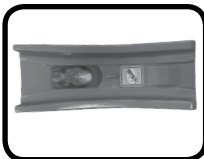
One stadium wall



Three S-tracks



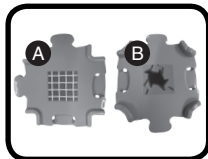
One S-track platform



One S-track exit



Two S-track supports



Two cross tracks



One switch track



Two platform
launcher supports



One bridge



One sign



One sign base



One end track

- Label sheet
- Quick Start Guide

WARNING

All packing materials such as tape, plastic sheets, packaging locks, removable tags, cable ties, cords and packaging screws are not part of this toy, and should be discarded for your child's safety.

NOTE

Please save this Instruction Manual as it contains important information.

ATTENTION

Pour la sécurité de votre enfant, débarrassez-vous de tous les produits d'emballage tels que rubans adhésifs, feuilles de plastique, attaches, étiquettes et vis d'emballage. Ils ne font pas partie du jouet.

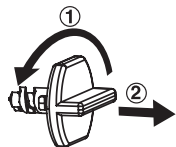
NOTE

Il est conseillé de sauvegarder ce manuel d'instructions car il comporte des informations importantes.

NOTE

This toy is not intended for teething.

Unlock the Packaging Locks



① Turn the packaging lock counterclockwise several times.

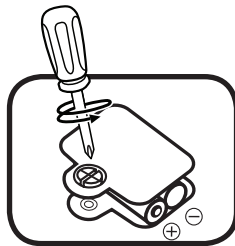
② Pull out the packaging lock and discard.

GETTING STARTED

Battery Removal and Installation

Monster Truck

1. Make sure the unit is turned **Off**.
2. Locate the battery cover on the bottom of the **Monster Truck**. Use a screwdriver to loosen the screw, then open the battery cover.
3. Remove old batteries by pulling up on one end of each battery.
4. Install 2 new AAA (AM-4/LR03) batteries following the diagram inside the battery box.
5. Replace the battery cover and tighten the screw to secure.



BATTERY NOTICE

- Insert batteries with the correct polarity (+ and -).
- Do not mix old and new batteries.
- Do not mix alkaline, standard (carbon-zinc) or rechargeable batteries.
- Only batteries of the same or equivalent type as recommended are to be used.
- Do not short-circuit the supply terminals.
- Remove batteries during long periods of non-use.
- Remove exhausted batteries from the toy.
- Dispose of batteries safely. Do not dispose of batteries in fire.

RECHARGEABLE BATTERIES:

- Remove rechargeable batteries from the toy before charging.
- Rechargeable batteries are only to be charged under adult supervision.
- Do not charge non-rechargeable batteries.



WARNING:

Adult assembly required for battery installation.
Keep batteries out of reach of children.

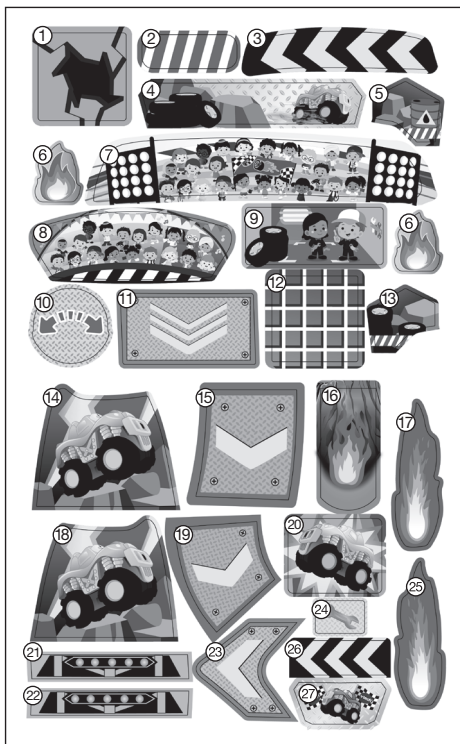


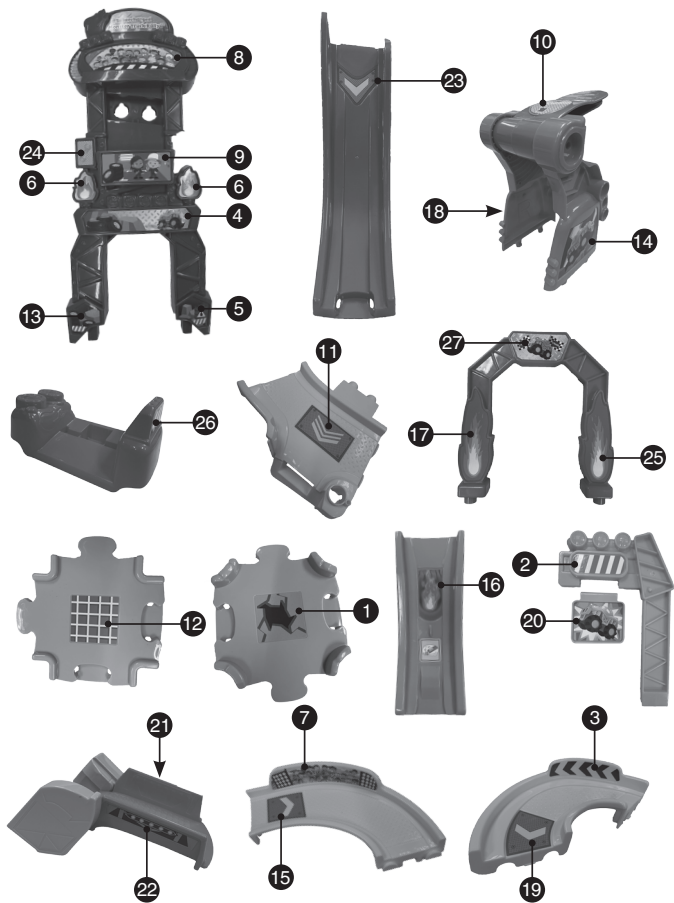
ATTENTION :

Les piles ou accumulateurs doivent être installés par un adulte.
Tenir les piles ou accumulateurs hors de portée des enfants.

LABEL APPLICATION

Please apply the labels to the playset as shown below:

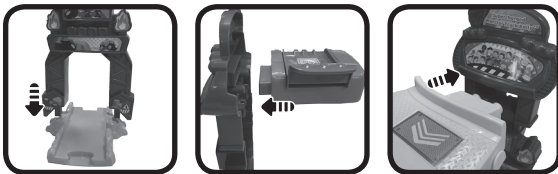




ASSEMBLY INSTRUCTIONS

With the **Go! Go! Smart Wheels® Supercharged Monster Truck Rally™**, safety comes first. To ensure your child's safety, adult assembly is required.

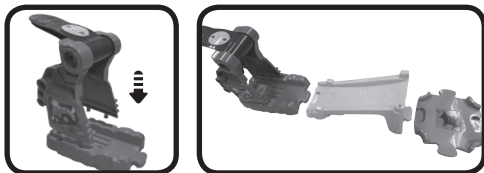
1. Connect the **Platform Launcher** and **S-Track B** with the **Stadium Wall**.



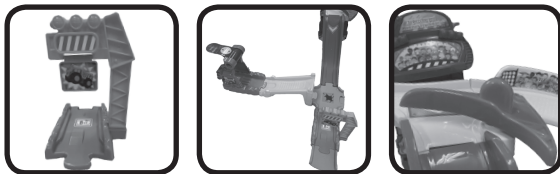
2. Connect the **Platform Launcher** with **S-Track A**, and connect **S-Track A**, **S-Track C** and **Slope Track C** with **S-Track B**.



3. Insert the **Jump Launcher** into the **Jump Launcher Base**, then connect with **Slope Track B** and **Cross Track B**.



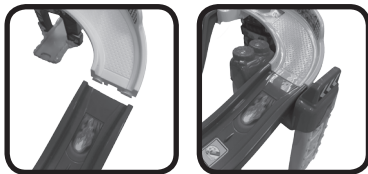
4. Insert the **Sign** into the **Sign Base** and connect with **Cross Track B**. Then connect with **Slope Track C** and insert the **Switch Track** into **S-Track B**.



5. Insert the two **Platform Launcher Supports** into the **S-Track Platform**, then insert **S-Track Support A** into **S-Track Support B**. Then connect **S-Track Support A** with **S-Track Exit**.



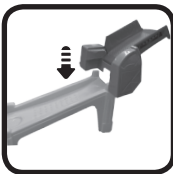
6. Connect **S-Track C** with **S-Track Exit** on the **S-Track Platform**.



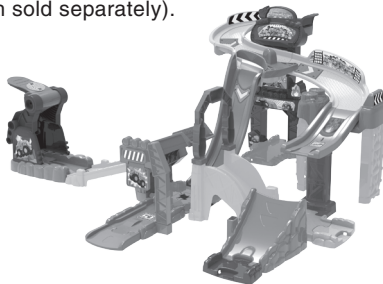
6. Connect the **Landing Ramp, Cross Track A** and one **1/3 Length Bulge Track** with **S-Track Support B**.



7. Insert the **Fire Awning** into **Slope Track A** and insert the **Bridge** into **Slope Track B**. Then connect **Cross Track A** and **B** with **Slope Track A**.





Once you've completed the above steps, you are ready to play! You can also connect the playset to other Go! Go! Smart Wheels® playsets (each sold separately).



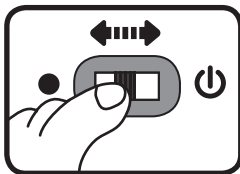
PRODUCT FEATURES

1. On/Off Switch

To turn the unit **On**, slide the **On/Off Switch** to the **On**  position. To turn the unit **Off**, slide the **On/Off Switch** to the **Off**  position.

2. Automatic Shut-Off

To preserve battery life, the **Monster Truck** will automatically power down after approximately 60 seconds without input. The unit can be turned on again by pressing light up button.



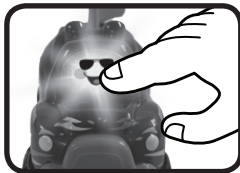
NOTE

If the unit powers down or if the light fades out during play, please install a new set of batteries.

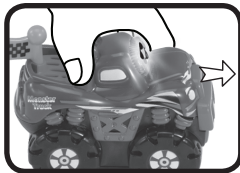
ACTIVITIES

Monster Truck

1. Press the windshield button on the **Monster Truck** to hear fun songs, exciting phrases, sounds and music. The lights will flash with the sound.



2. Push the **Monster Truck** to hear fun sounds. If a melody is already playing, push the **Monster Truck** to add fun sounds on top of the melody. The light will flash with the sounds.



3. For added fun, the **Monster Truck** interacts with the **Go! Go! Smart Wheels® Supercharged Monster Truck Rally**. Simply put the **Monster Truck** on one of the playset's four **SmartPoint®** locations to hear fun sounds and see light flash. The **Monster Truck** also interacts with other **Go! Go! Smart Wheels®** playsets (each sold separately).



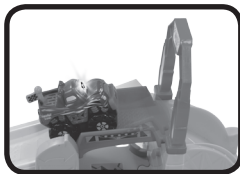
ACTIVITIES

Supercharged Monster Truck Rally

1. Place the **Monster Truck** or any **SmartPoint®** vehicle (each sold separately) on any of the playset's four **SmartPoint®** locations to trigger fun sounds, short tunes or phrases.
2. Place the **Monster Truck** on the **Jump Launcher** and press the back of the lever to launch the vehicle onto the tracks.
3. Place the **Monster Truck** on the **Platform Launcher** and lift the platform to launch the vehicle onto the tracks.



4. Push the **Monster Truck** over the **Bridge** and it will lower as the vehicle passes.



5. Flip the **Switch Track** to send the vehicle in a different direction down the tracks.





MELODY LIST

1. Take Me Out to the Ball Game
2. Chopsticks
3. Flight of the Bumble Bee
4. For He's a Jolly Good Fellow
5. Bingo
6. Row, Row, Row Your Boat

SING-ALONG SONG LYRICS

Song 1

Climbing up and speeding down.
I like to rush 'round on my tracks,
Faster faster, here we go!
I'm the fastest truck you'll ever know!




Song 2

Start my engine, spin my wheels
Watch me climb and bounce around,
3-2-1, here I go!
Come on and watch me race!

Song 3

Go! Go! Smart Wheels!
Go! Go! Smart Wheels!
I'm a Go! Go! Smart Wheels Monster Truck
Let's start the exciting show! (Go! Go!)
Racing through and round the ramps,
Let's go, go and see! (Go! Go!)






CARE & MAINTENANCE

1. Keep the unit clean by wiping it with a slightly damp cloth.
2. Keep the unit out of direct sunlight and away from any direct heat source.
3. Remove the batteries if the unit will not be in use for an extended period of time.
4. Do not drop the unit on hard surfaces and do not expose the unit to moisture or water.


TROUBLESHOOTING

If for some reason the unit stops working or malfunctions, please follow these steps:

1. Turn the unit **Off**.
2. Interrupt the power supply by removing the batteries.
3. Let the unit stand for a few minutes, then replace the batteries.
4. Turn the unit **On**. The unit should now be ready to use again.
5. If the unit still does not work, install a new set of batteries.



If the problem persists, please call our Consumer Services Department at 1-800-521-2010 in the U.S. or 1-877-352-8697 in Canada, or by going to our website at vtechkids.com and filling out our Contact Us form located under the Customer Support link.



IMPORTANT NOTE:

Creating and developing **VTech**[®] products is accompanied by a responsibility that we at **VTech**[®] take very seriously. We make every effort to ensure the accuracy of the information, which forms the value of our products. However, errors sometimes can occur. It is important for you to know that we stand behind our products and encourage you to call our Consumer Services Department at 1-800-521-2010 in the U.S. or 1-877-352-8697 in Canada, or by going to our website at vtechkids.com and filling out our Contact Us form located under the Customer Support link with any problems and/or suggestions that you might have. A service representative will be happy to help you.

NOTE

This equipment has been tested and found to comply with the limits for a Class B digital device, pursuant to Part 15 of the FCC Rules. These limits are designed to provide reasonable protection against harmful interference in a residential installation. This equipment generates, uses and can radiate radio frequency energy and, if not installed and used in accordance with the instructions, may cause harmful interference to radio communications. However, there is no guarantee that interference will not occur in a particular installation. If this equipment does cause harmful interference to radio or television reception, which can be determined by turning the equipment off and on, the user is encouraged to try to correct the interference by one or more of the following measures:

- Reorient or relocate the receiving antenna.
- Increase the separation between the equipment and receiver.
- Connect the equipment into an outlet on a circuit different from that to which the receiver is connected.
- Consult the dealer or an experienced radio/TV technician for help.

Caution: Changes or modifications not expressly approved by the party responsible for compliance could void the user's authority to operate the equipment.

**Supplier's Declaration of Conformity
47 CFR § 2.1077 Compliance Information**

Trade Name: VTech®
Model: 5405
Product Name: Go! Go! Smart Wheels® Supercharged
Monster Truck Rally™
Responsible Party: VTech Electronics North America, LLC
Address: 1156 W. Shure Drive, Suite 200
Arlington Heights, IL 60004
Website: vtechkids.com

THIS DEVICE COMPLIES WITH PART 15 OF THE FCC RULES.
OPERATION IS SUBJECT TO THE FOLLOWING TWO CONDITIONS:
(1) THIS DEVICE MAY NOT CAUSE HARMFUL INTERFERENCE, AND
(2) THIS DEVICE MUST ACCEPT ANY INTERFERENCE RECEIVED,
INCLUDING INTERFERENCE THAT MAY CAUSE UNDESIRE
OPERATION.



**Visit our website for more
information about our products,
downloads, resources and more.**

vtechkids.com
vtechkids.ca

Read our complete warranty policy online at
vtechkids.com/warranty
vtechkids.ca/warranty



TM & © 2021 VTech Holdings Limited.
All rights reserved.
Printed in China.
91-003998-000 (E)